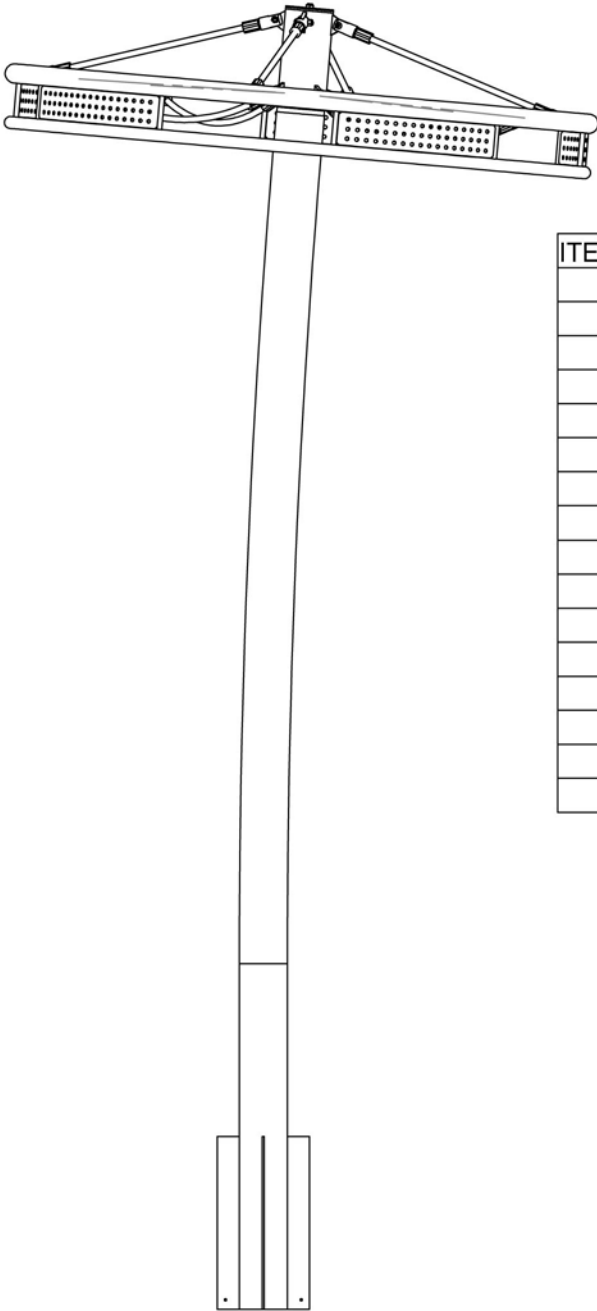


Graviton Install Instructions



ITEM NO.	QTY.	PART NO.	DESCRIPTION
1	1	41751XX	PAINTED ASSY, GRAVITON, MAIN POST
2	1	4175601	SPACER, GRAVITON, BEARING
3	2	4013601	BEARING, 6208, 1.57 ID
4	2	4175701	HOUSING, BEARING, 5.0
5	1	4175801	SPACER, GRAVITON, CENTER
6	1	41759XX	PAINTED ASSY, GRAVITON, HOUSING
7	1	41762XX	PAINTED ASSY, GRAVITON, COVER
8	1	1023701	NUT, CASTLE, 1"-14
9	1	1023801	WASHER, 1.063 ID X 2.0 OD
10	1	1023901	PIN, COTTER, .188 DIA X 2.0, SS
11	1	41764XX	PAINTED ASSY, GRAVITON, WHEEL
12	4	4177101	ROPE ASSY, GRAVITON, UPPER
13	4	4177101	ROPE ASSY, GRAVITON, UPPER
14	1	1018201	NUT, 1/2-13, NYLOCK LOW PRO, SS
15	16	1026506	BHCS, 3/8-16 X 1.75, SS
16	16	1018301	NUT NYLOCK, 3/8-16, SS, STD

Graviton Tools List

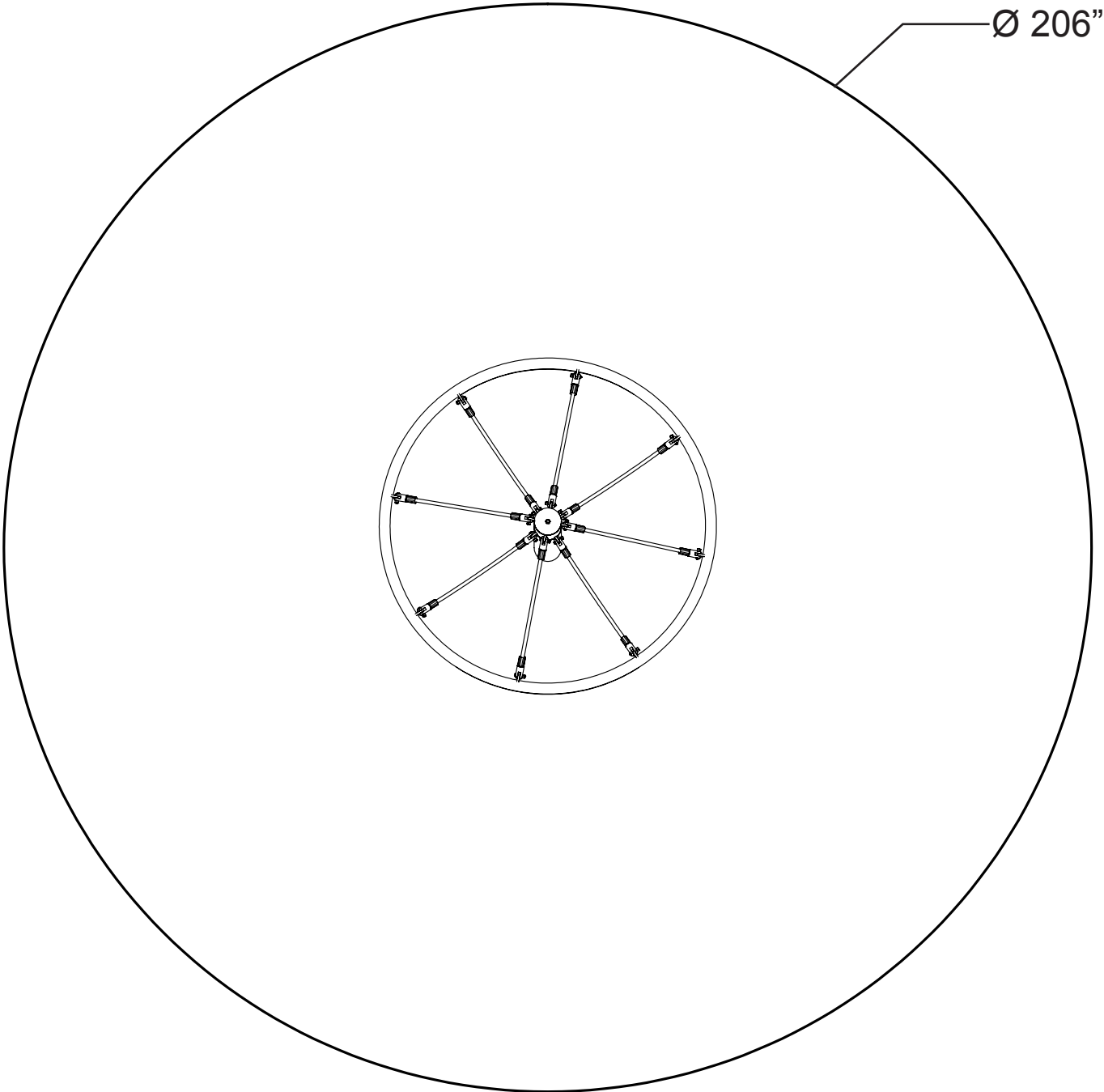
3/4" Wrench or socket
 9/16" Wrench or socket
 Rubber hammer
 Level/angle meter



Xccent Play - www.xccentplay.com
 5240 257th St, Wyoming, MN 55092
 (800) 933-4748 Fax: (651) 462-9299

Graviton Assembly

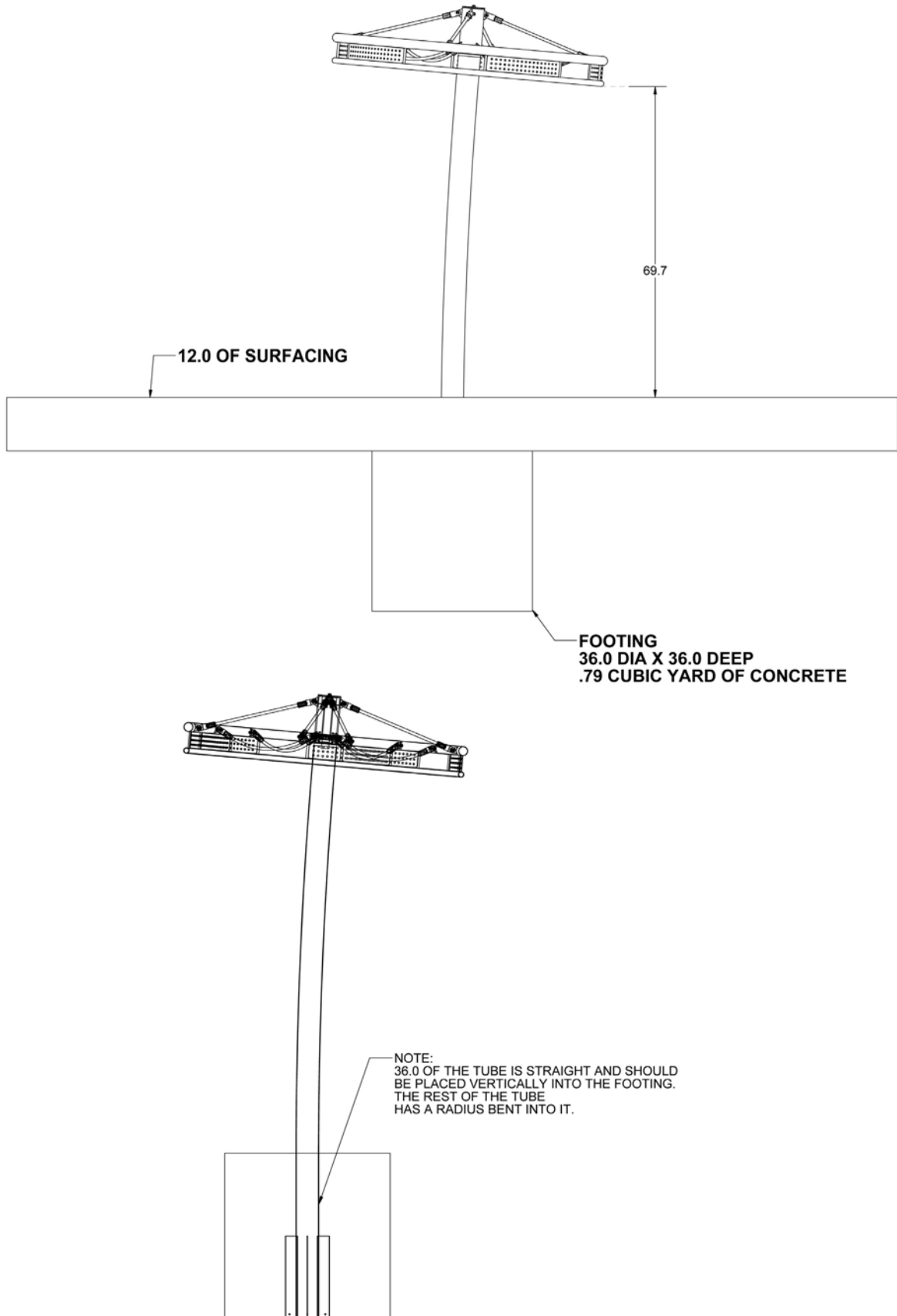
Use Zone



Use zone for the Graviton is Ø 206"

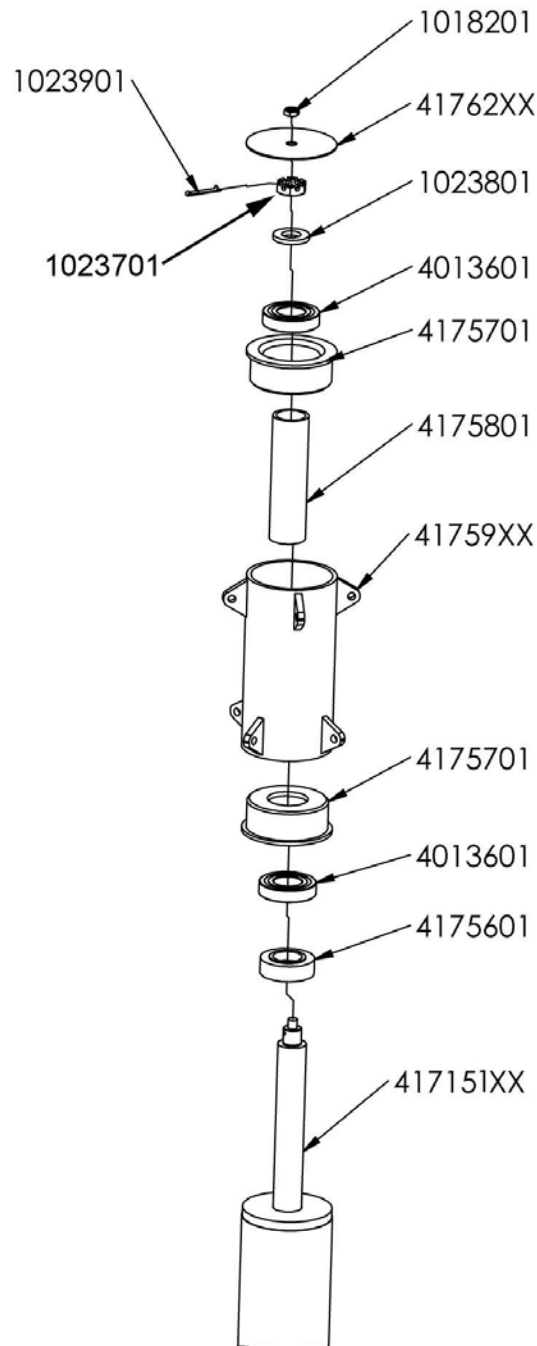
Graviton Assembly

Footings



Graviton Assembly

Bearing Assembly



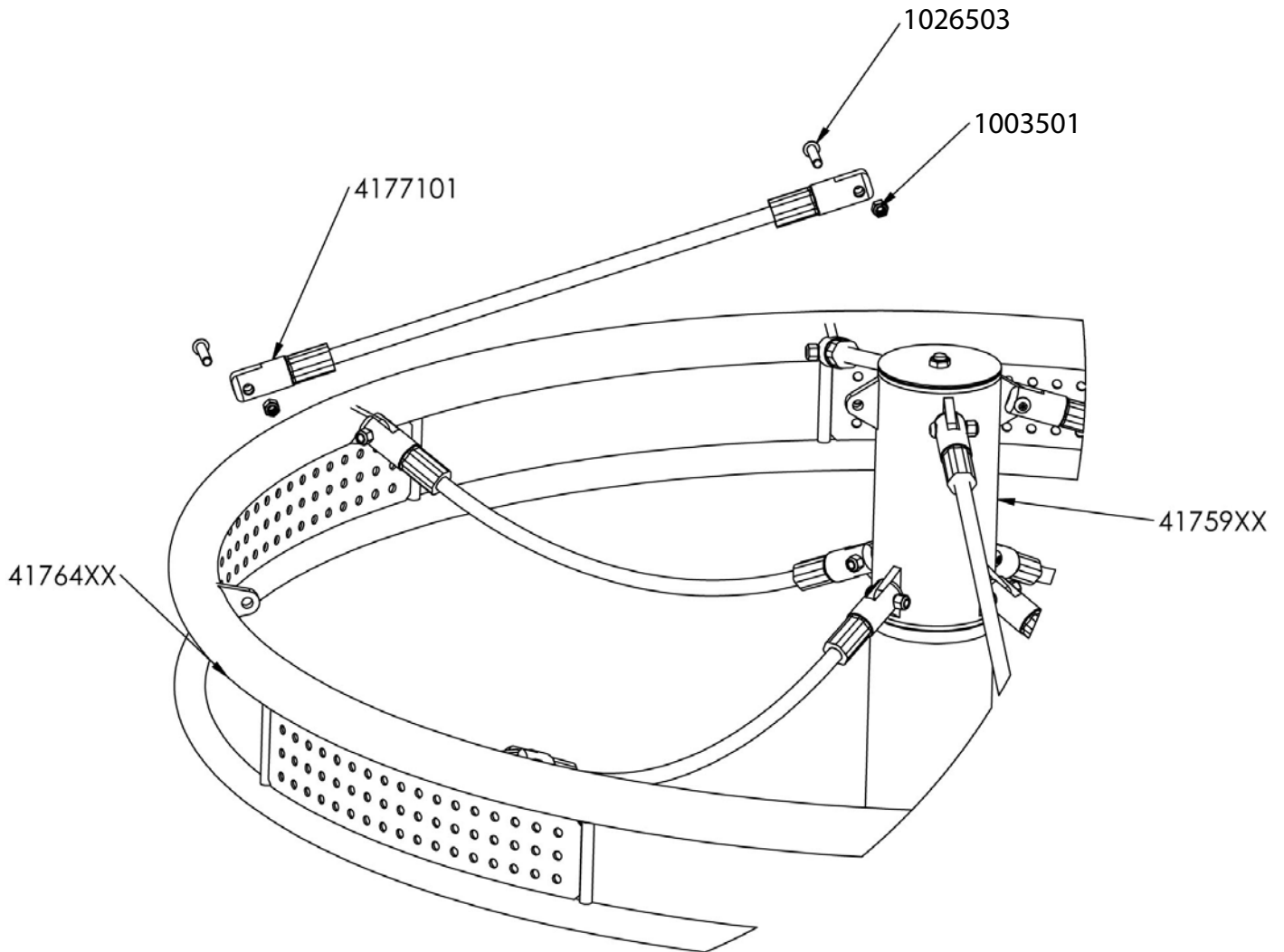
While on the ground, take the bearing assembly (41759XX) and assemble the bearing sleeves (4175701) into both ends. It will be a tight fit, and you may have to tap them in lightly with a rubber hammer.

Slide the spacer (4175601) over the shaft, followed by the bearing (4013601). Slide the bearing housing assembly that you assembled first step over the bearing. Next, insert spacer (4175801), then the outer bearing (4013601). Install washer (1023801) and screw on castle nut (1023701).

Add cotter pin (1023901) and secure the castle nut to the shaft. Set top-cap (41762XX) on the shaft and secure with a 1/2 nut (1018201). Place full assembly in hole.

Graviton Assembly

Step 4



Attach one end of each rope (4177101) to the Graviton wheel (41764XX) using a 3/8" bolt (1026503) and nylock nut (1003501).

Lift the wheel and attach the other end of the rope (4177101) to the bearing housing (41759XX), making sure to stagger each rope on the bearing housing.